

OPERATING ENGINEER (Also see 2012 Operating Engineers Application Process Flyer with Directions at: http://www.wmconstructionalliance.org/training_pdf/34.pdf)

Nature of the Work

Operating Engineers are the people who operate and maintain various types of power driven construction machines, such as bulldozers, cranes, pumps, pile drivers, asphalt and concrete plants, derricks, rollers, graders, pavers, and tractors which dig, scrape and move great amounts of earth and hoist building materials. Some machines require the operators to turn valves, adjust hand wheels and press pedals to operate the machines and control the attachments. Other machines, such as cranes, require the constant use of both hands and both feet. Operating Engineers may also be required to service their machines and move the machines from one construction site to another.

Working Conditions

Operating Engineers should enjoy working with machines and equipment and be mechanically inclined. They must be able to do routine, repetitive work and work either as a team on large projects or alone. They should be able to withstand the jolting and vibration of the machines and must have an interest in and the ability to learn correct methods of handling the powerful equipment in a safe manner. The job demands good eyesight, muscular coordination and depth perception.

Interest and Personal Qualities

All work is performed in the open, except for a few machines equipped with enclosed cabs. Earth excavating and grading equipment operators and road building equipment operators generally work from early spring until the fall freeze and shut down only when it rains. The work might be dusty and dirty and they may have to travel long distances to work.

General Qualifications

- Age - not less than 18 years of age.
- Physically fit for the work of the trade as determined by a doctor's examination.

Admission Requirements of JATF

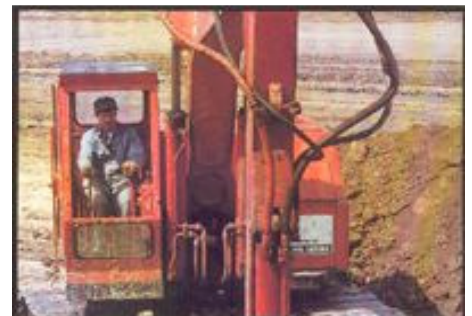
- Application
- Drug Test
- High School Transcripts and GED Certificate if person did not graduate
- Valid Michigan Drivers License
- Military Service Record of honorable discharge (if applicable)

Terms of Training

- Length of apprenticeship – Minimum of three years or 6000 hours.
- Minimum hours of related training and classroom instruction - 200 hours each year.
- Length of probationary period – 90 days.

Who to Contact/Available Applications

Operating Engineers Local 324
Journeyman & Apprentice Training Fund, Inc.
Contact: Lee Graham
275 East Highland Road
Howell, MI 48843
Telephone: (517) 546-9610
Fax (517) 546-9793
Email: lee.graham@iuoe324.org
Web: www.iuoe324.org/



All applicants are afforded equal opportunity without regard to race, religion, color, sex, national origin, age or disability.